

# OWAtecta cleanRoom partition system System: standard U (LBU)

Partition code: L(A,B,C,X)U

- the first letter of the code L: prefix for partition wall

- the second letter of the code describes a core type:

A - core of panel made of aluminum honeycomb,

B - core of panel made of paper honeycomb,

C - core of panel made of mineral wool,

X - core of panel made of (XPS) foam,

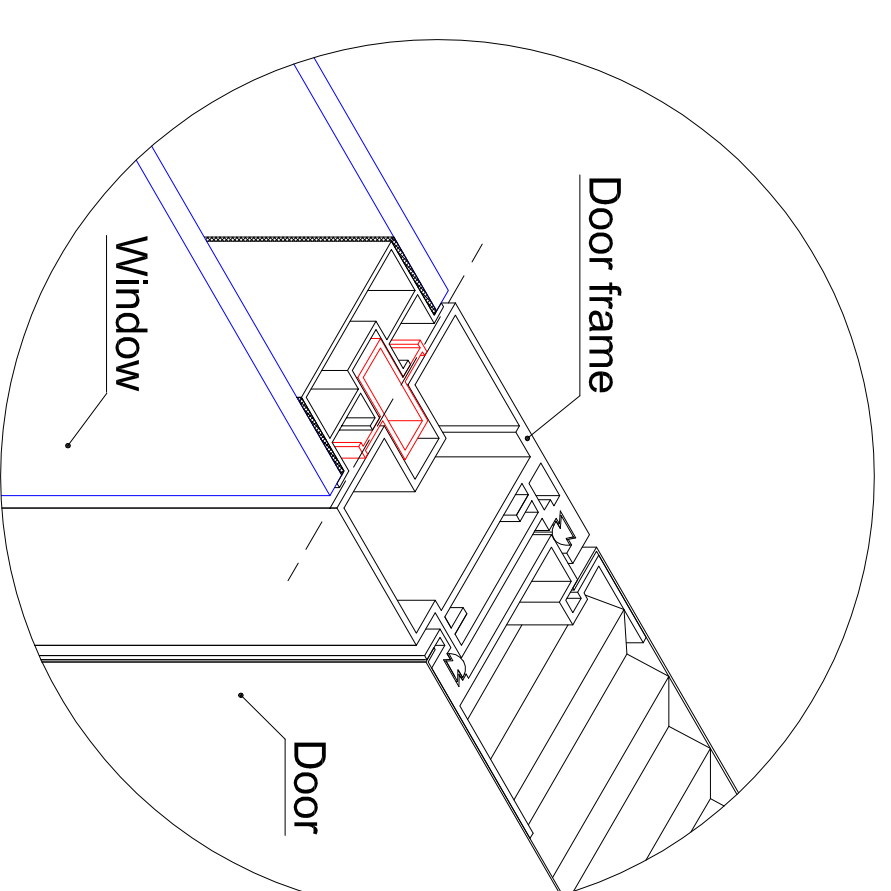
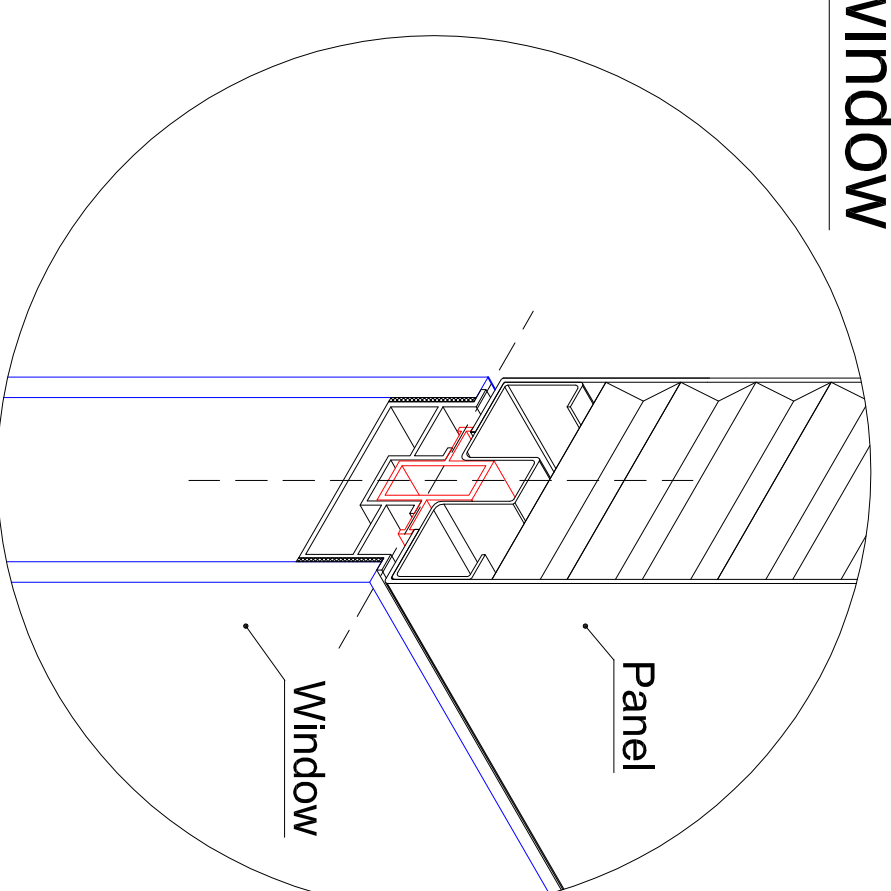
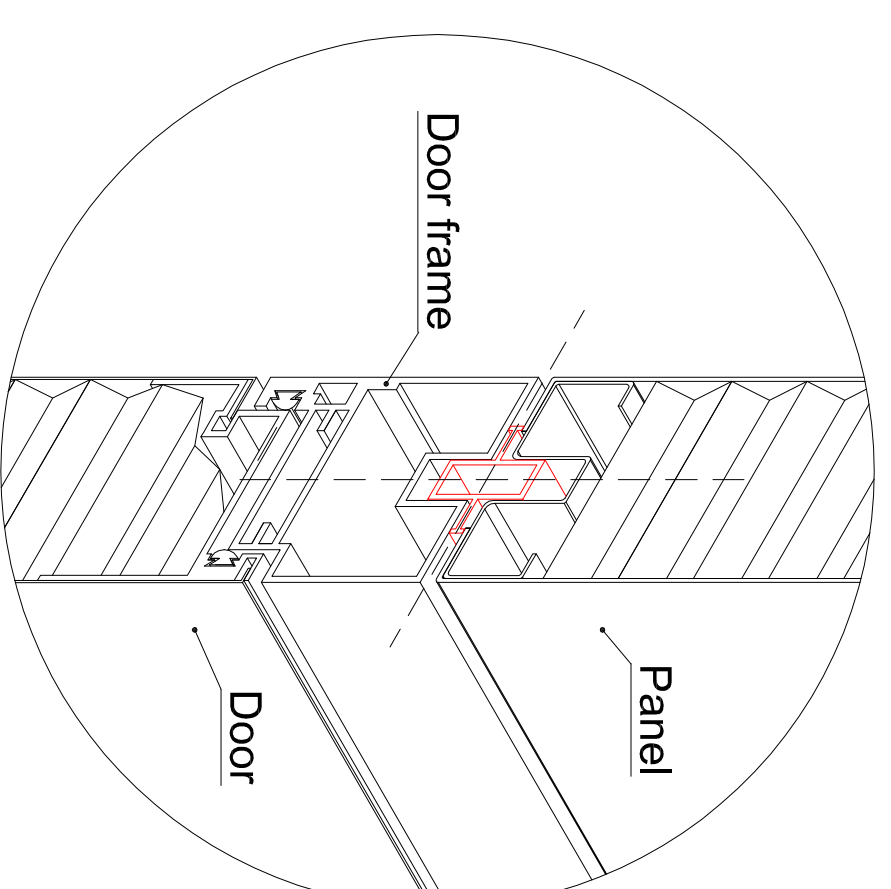
- the third letter of the code describes ending aluminium profiles:

U - standard

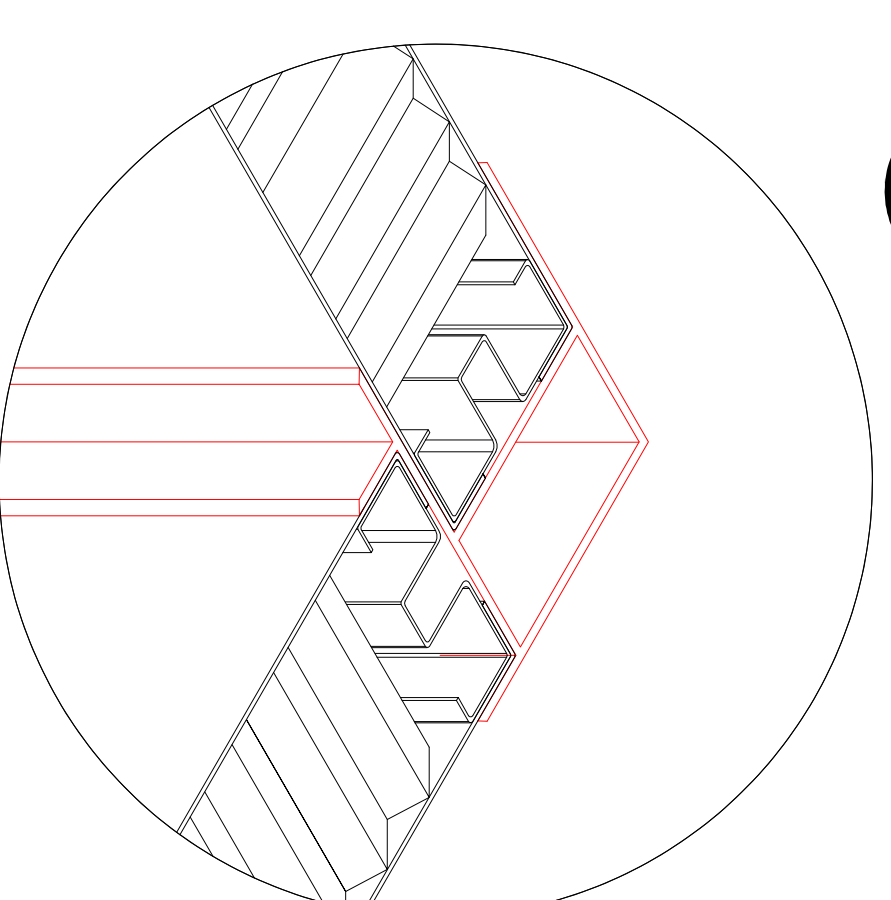
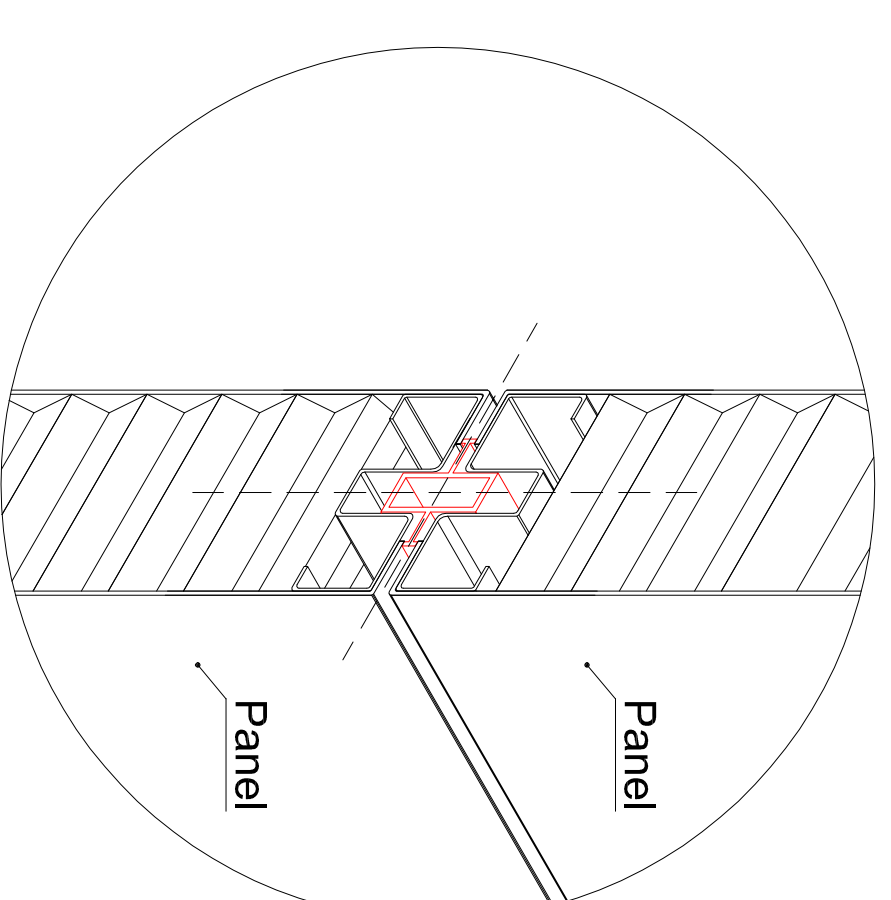
L - rounded

Q - adjustable

## E Section: panel/door frame/door

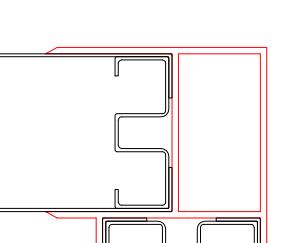


## F Section: horizontal panel connection

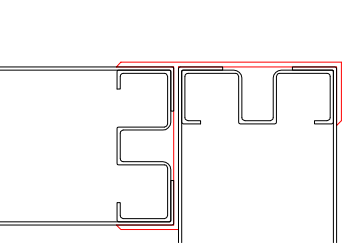


## G Corner

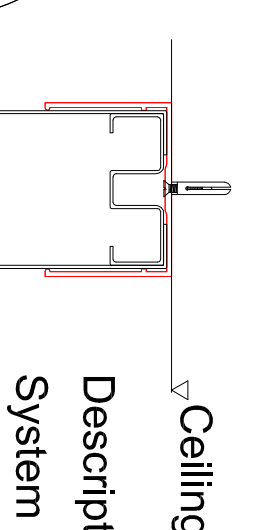
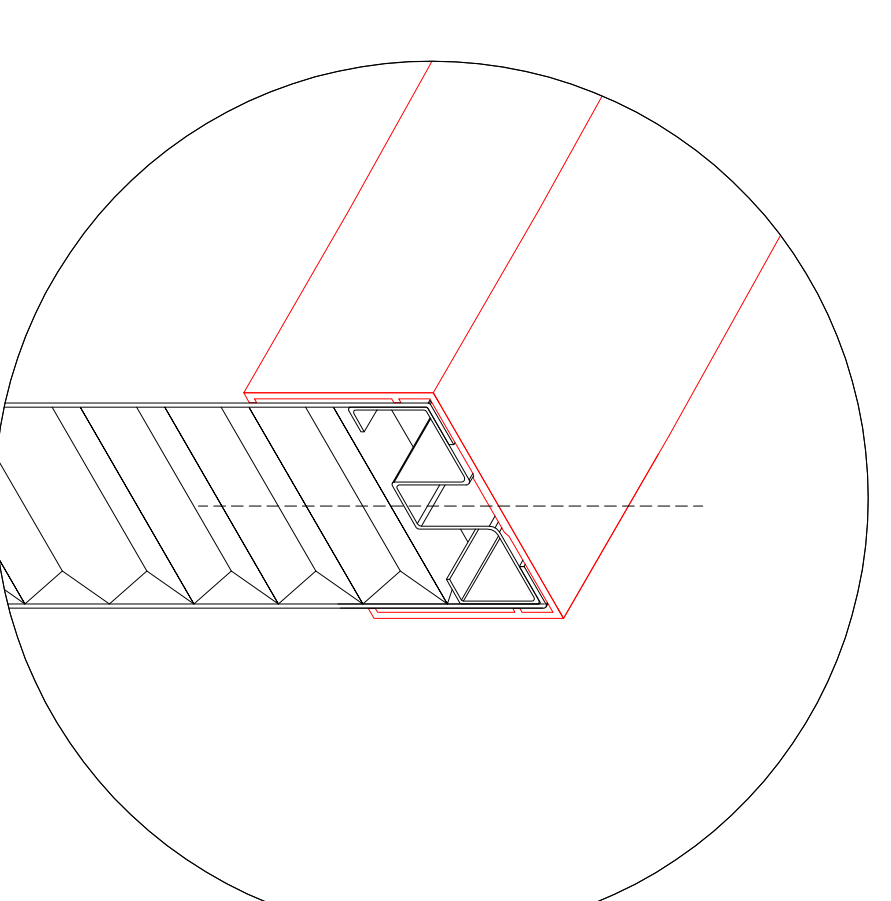
Description: Right angle aluminium corner  
System type: L(A,B,C,X)U - standard



Description: Y type aluminium corner  
System type: L(A,B,C,X)U - standard

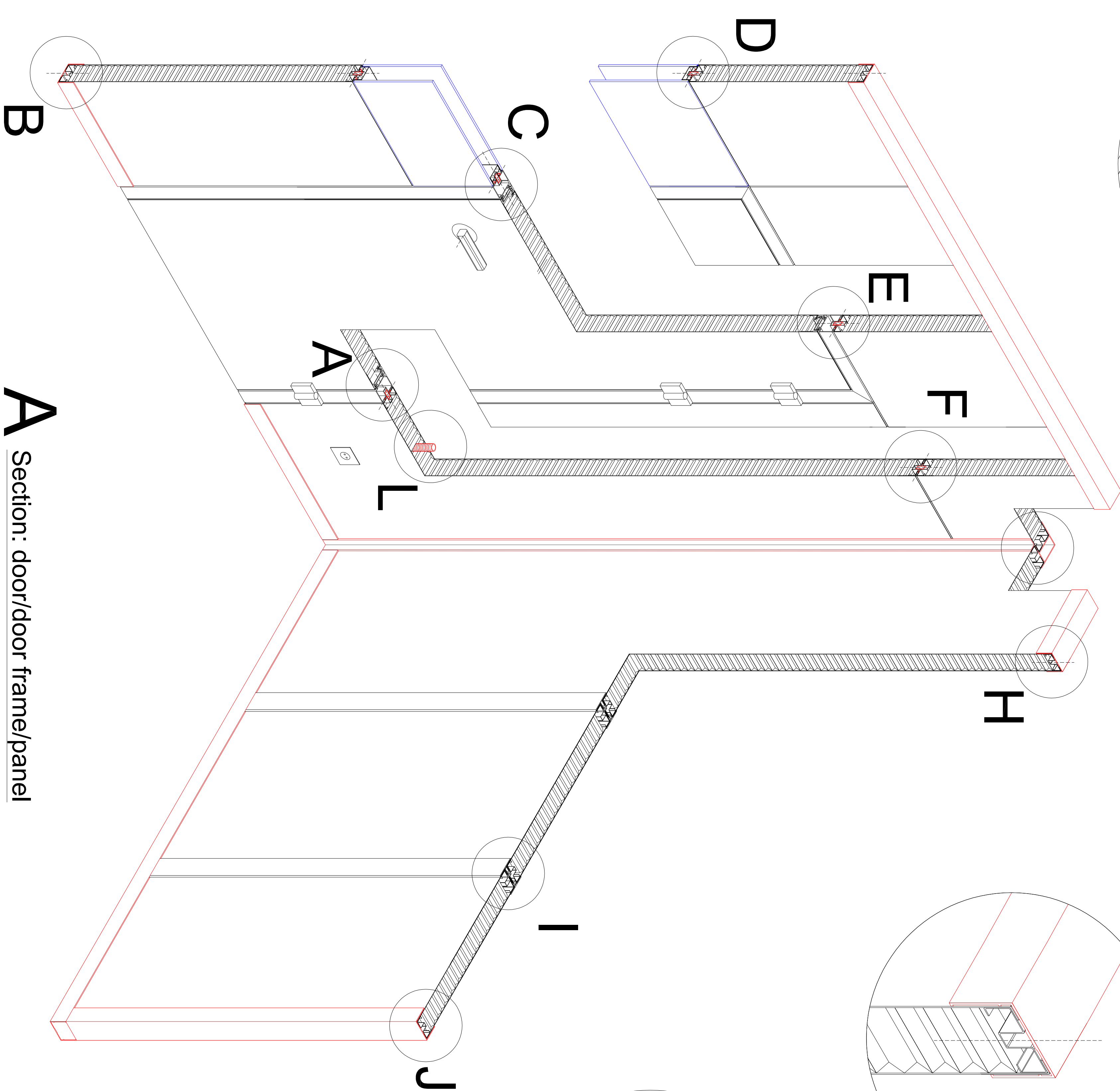


## H Wall-ceiling connection

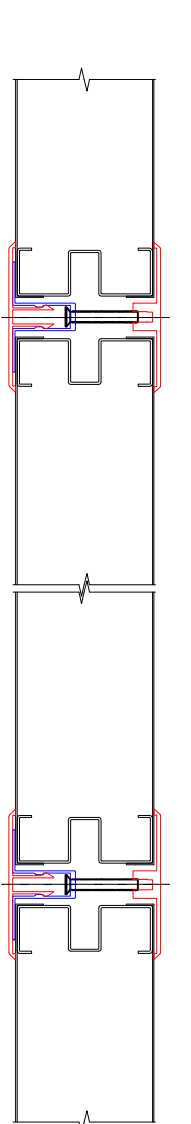
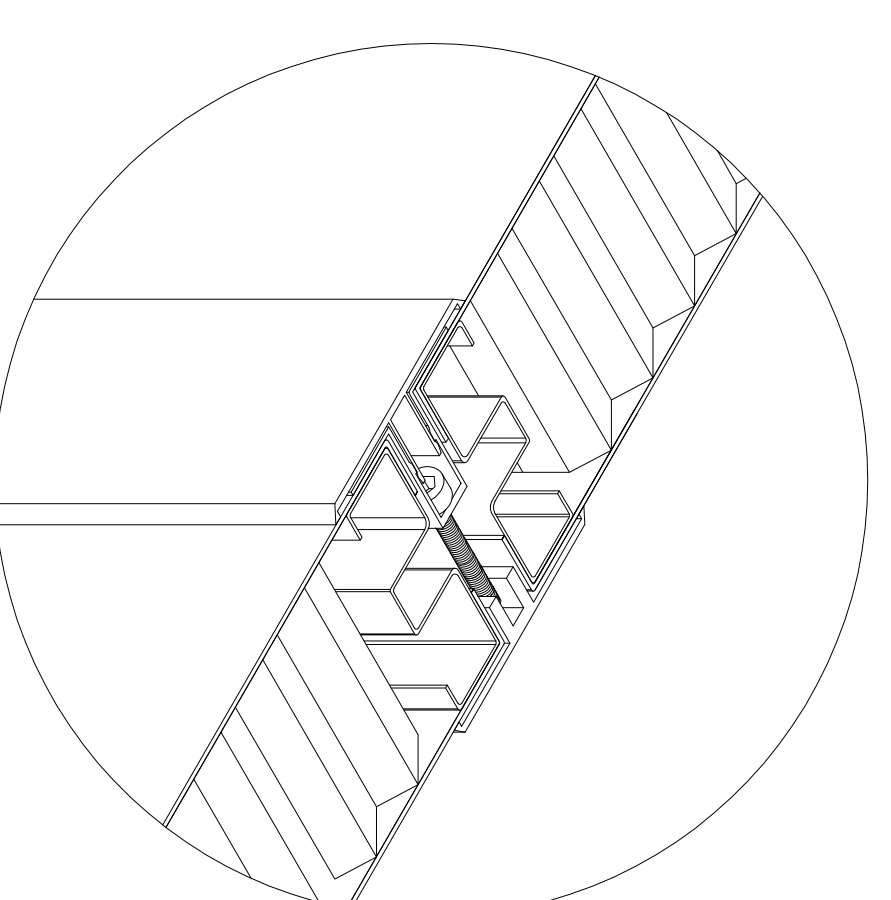


Description: aluminium U-type profile  
System type: L(A,B,C,X)U - standard

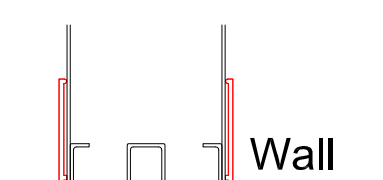
## D Section: panel/window



## I Demountable panel



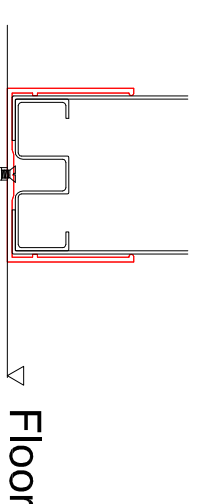
## C Section: window/door frame/door



Description: aluminium U-type profile  
System type: L(A,B,C,X)U - standard

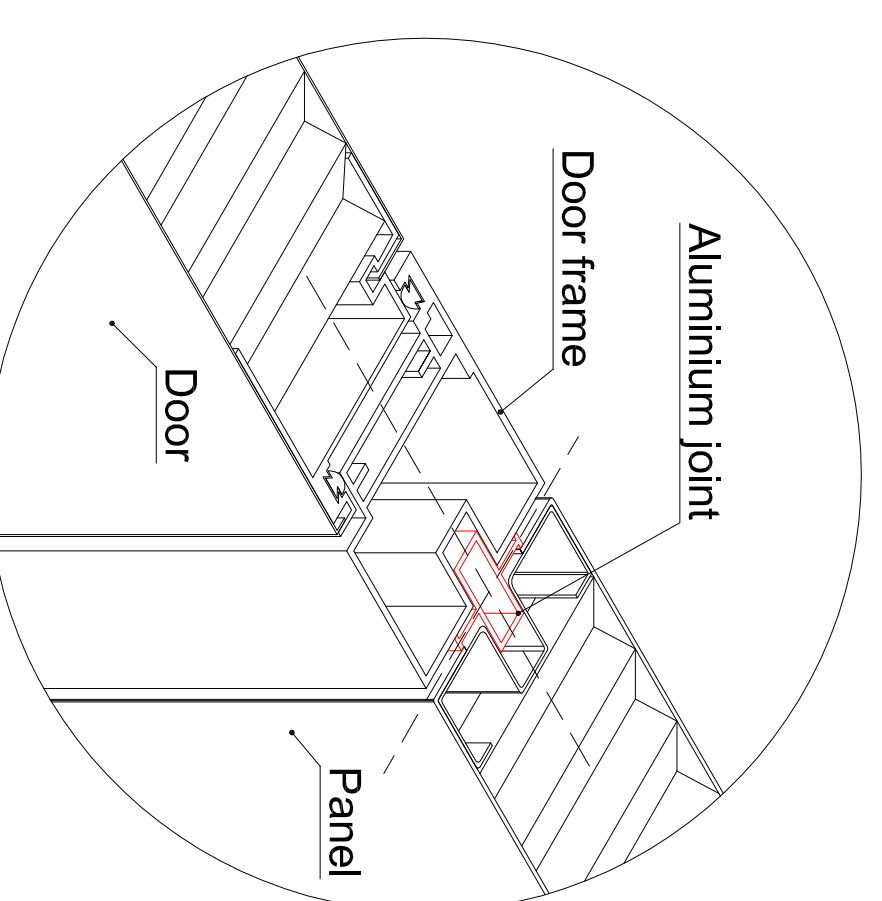
## J Wall-wall connection

## B Wall-floor connection



Description: aluminium U-type profile  
System type: L(A,B,C,X)U - standard

## A Section: door/door frame/panel



## L PCV tubes for electrical installation

