

OWAtecta cleanRoom partition system System: adjustable Q (LBQ)

Partition code: L(A,B,C,X)L

- the first letter of the code L: prefix for partition wall

- the second letter of the code describes a core type:

A - core of panel made of aluminum honeycomb,

B - core of panel made of paper honeycomb,

C - core of panel made of mineral wool,

X - core of panel made of (XPS) foam,

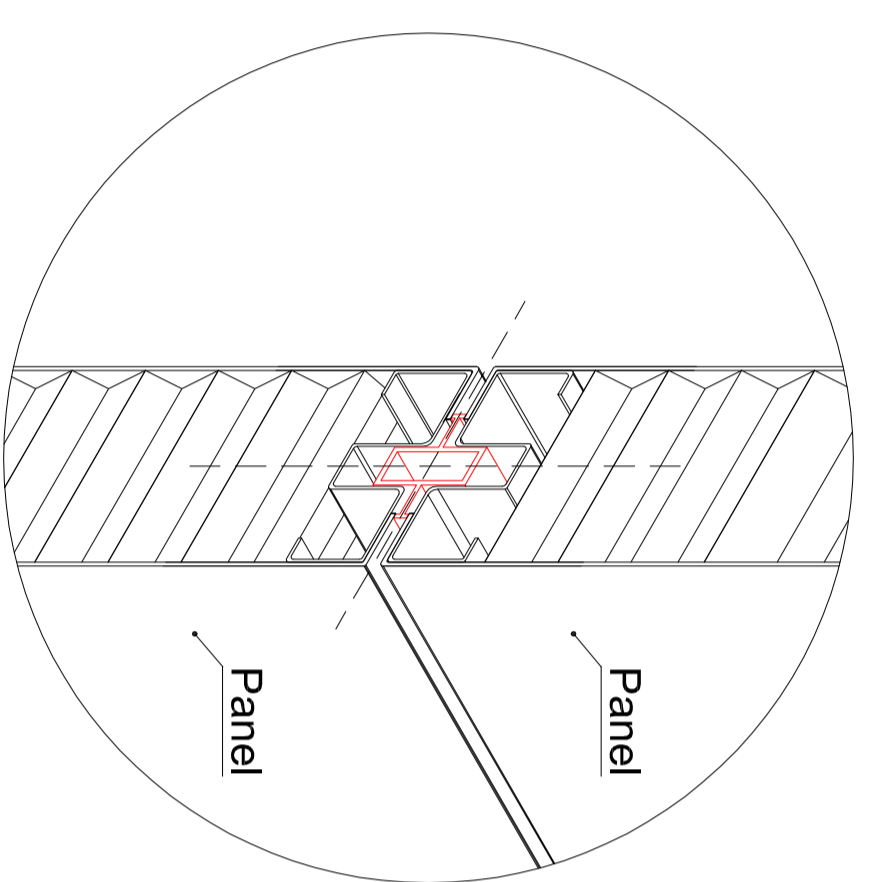
- the third letter of the code describes ending aluminium profiles:

U - standard

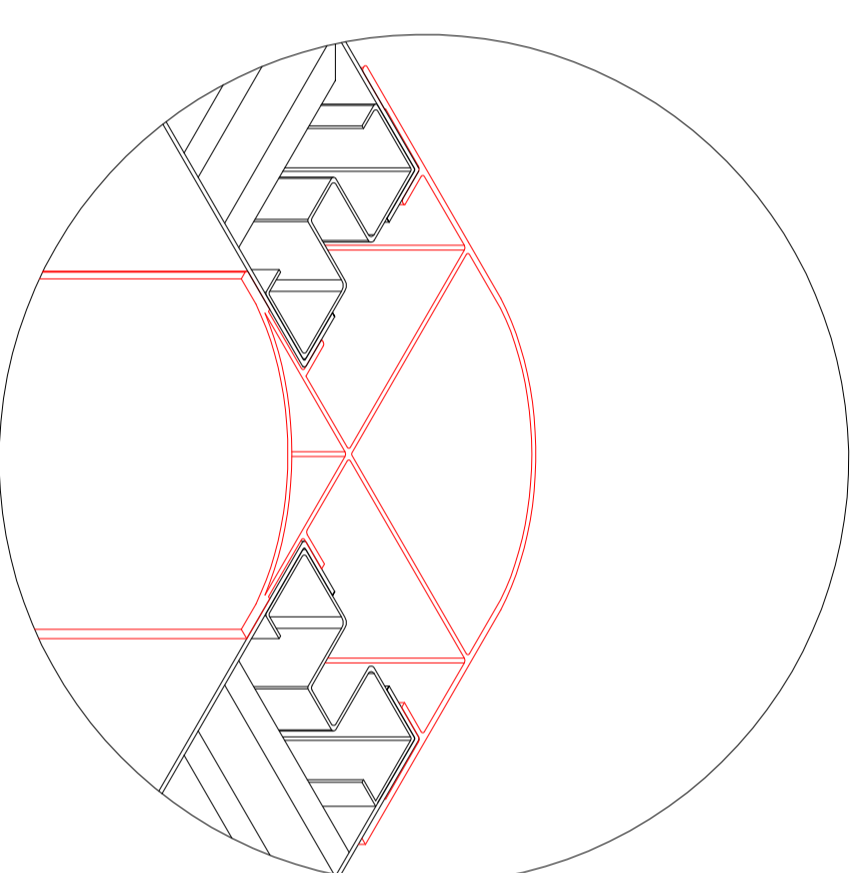
L - rounded

Q - adjustable

F Section: horizontal panel connection



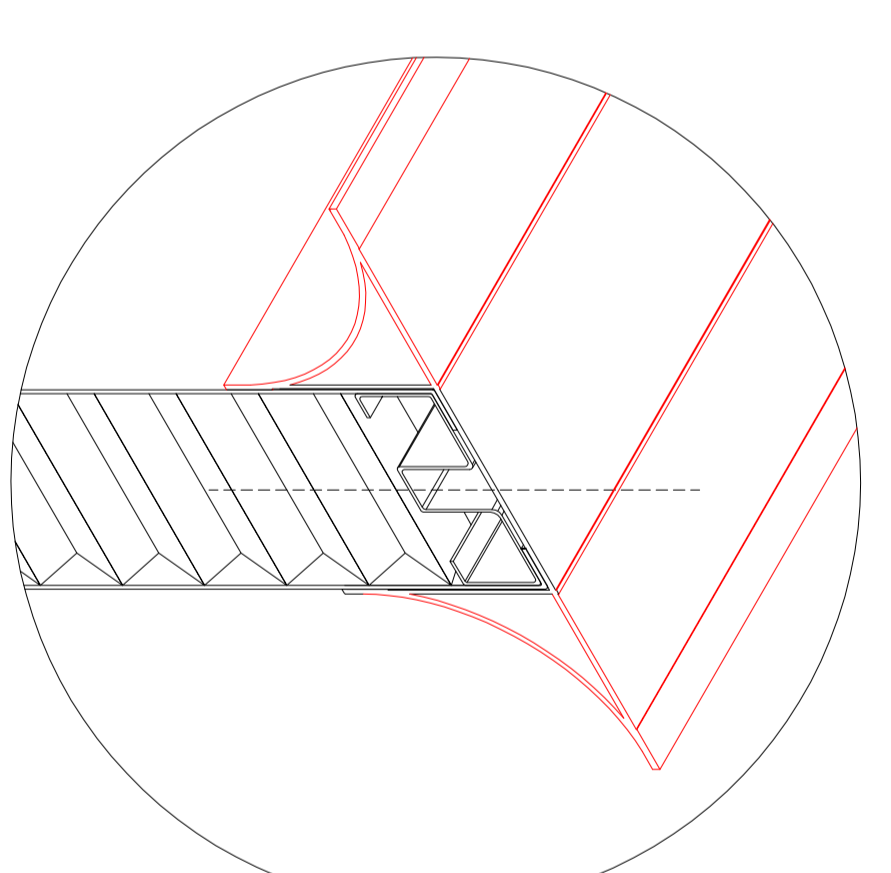
G Corner



Description: Aluminium corner rounded from one side
System type: L(A,B,C,X)L - rounded

Description: Aluminium corner rounded from both sides
System type: L(A,B,C,X)L - rounded

H Wall-ceiling connection types:

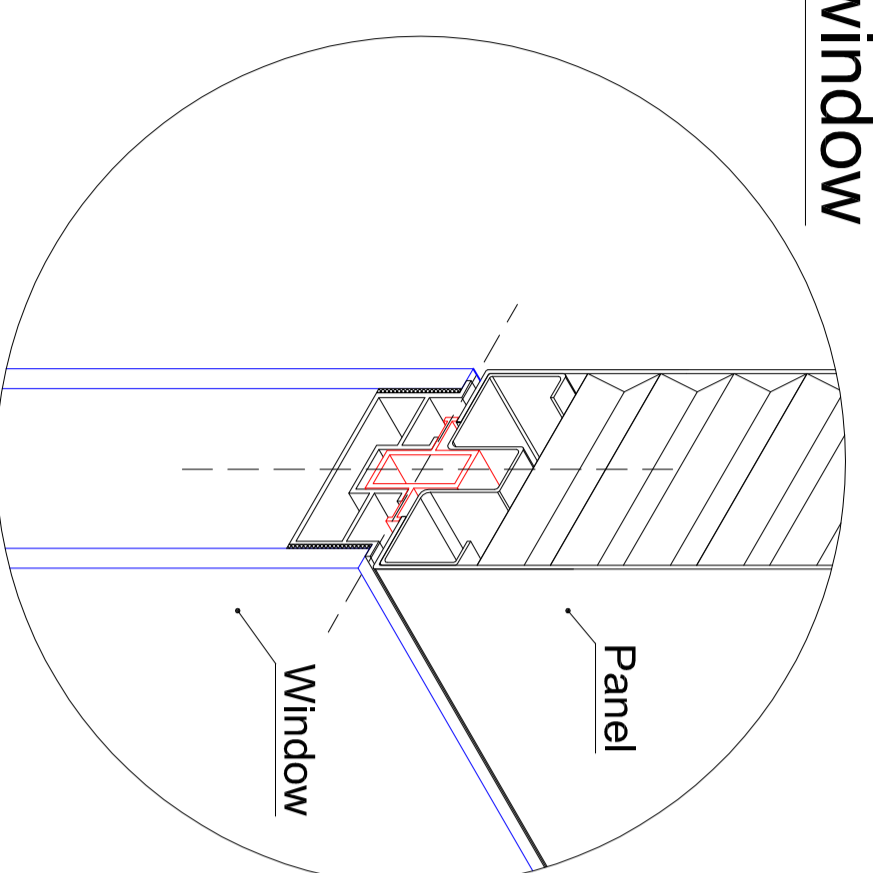


Description: aluminium profile rounded from one side
System type: L(A,B,C,X)L - rounded

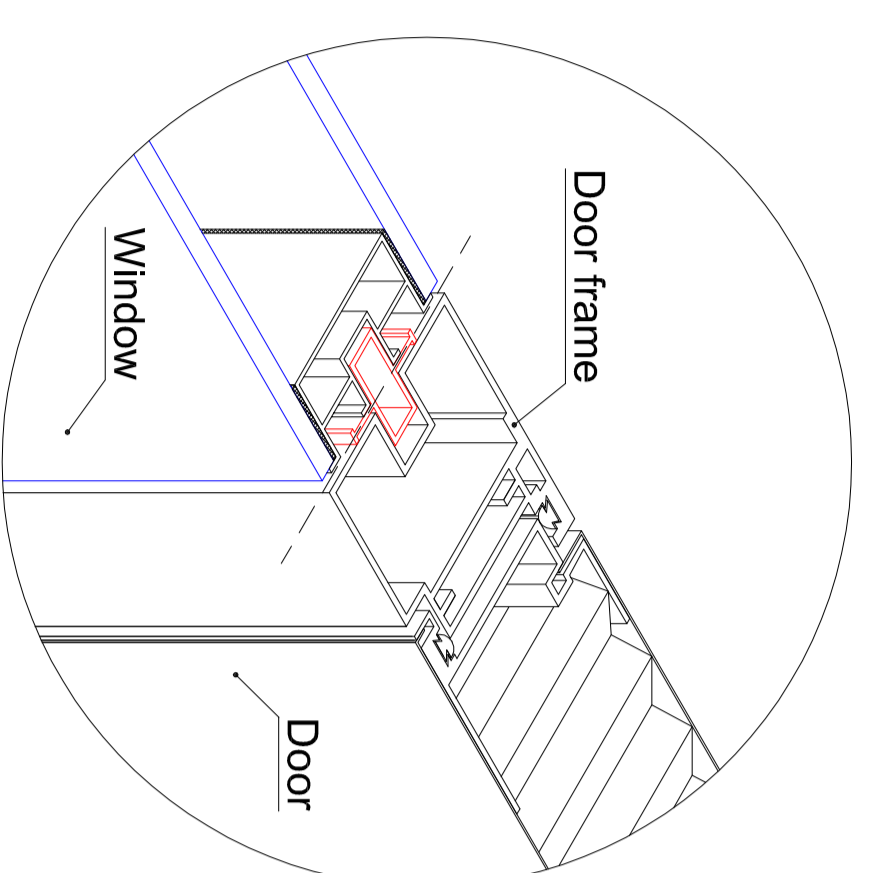
Description: aluminium profile rounded from both sides
System type: L(A,B,C,X)L - rounded

Description: aluminium ceiling rounded profile
System type: L(A,B,C,X)L - rounded

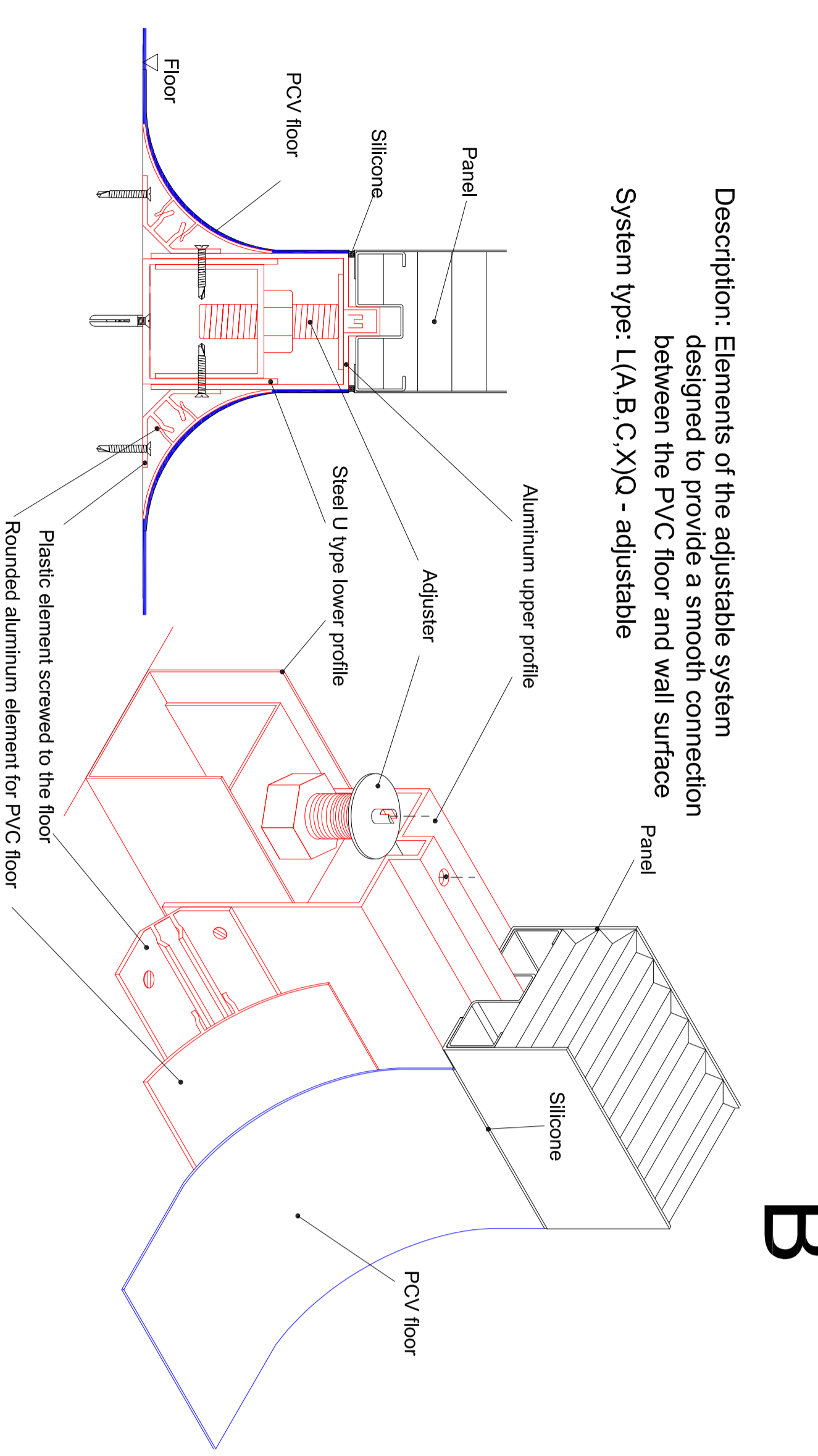
D Section: panel/window



C Section: window/door frame/door

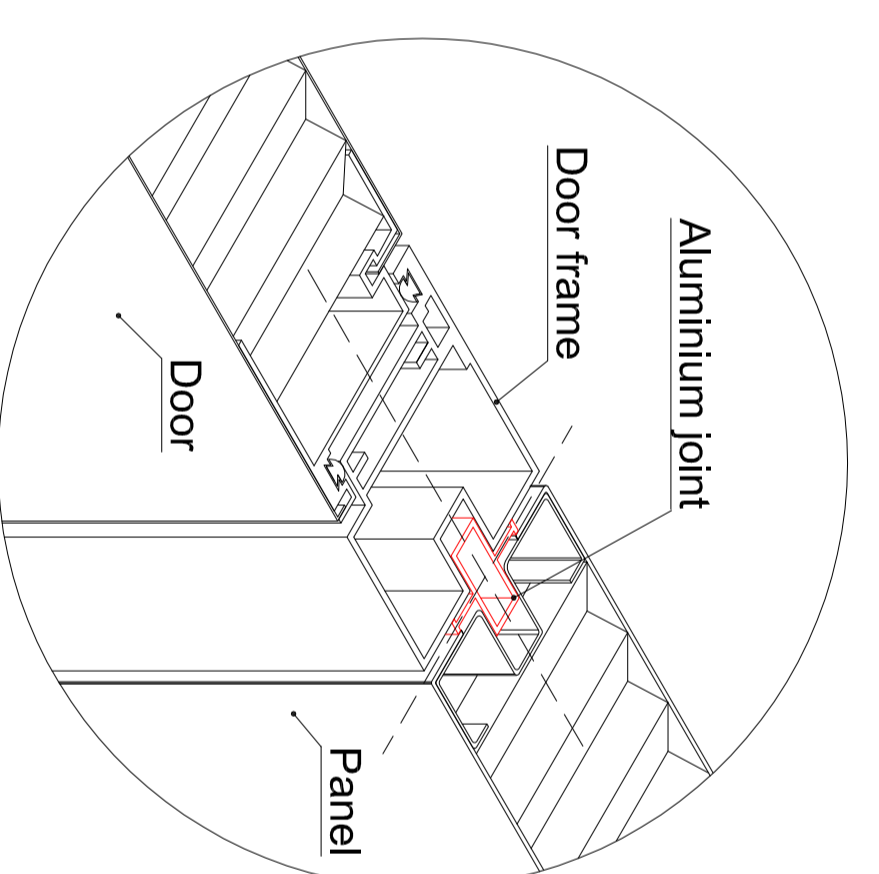


B Wall-floor connection

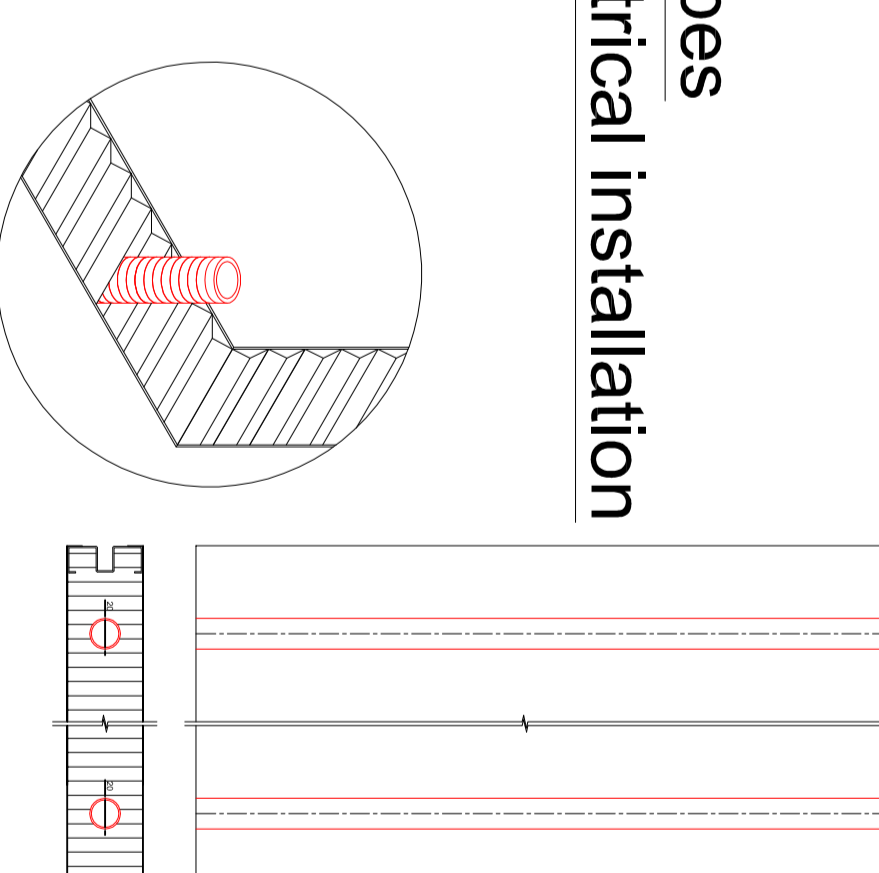


Description: Elements of the adjustable system designed to provide a smooth connection between the PVC floor and wall surface
System type: L(A,B,C,X)Q - adjustable

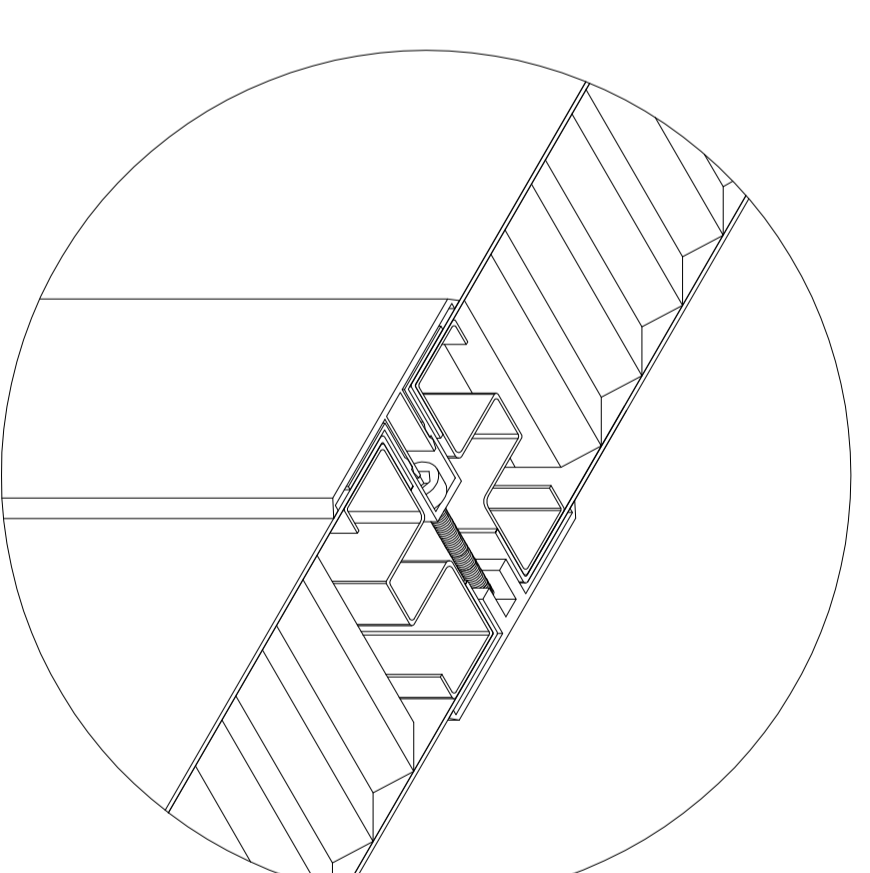
A Section: door/door frame/panel



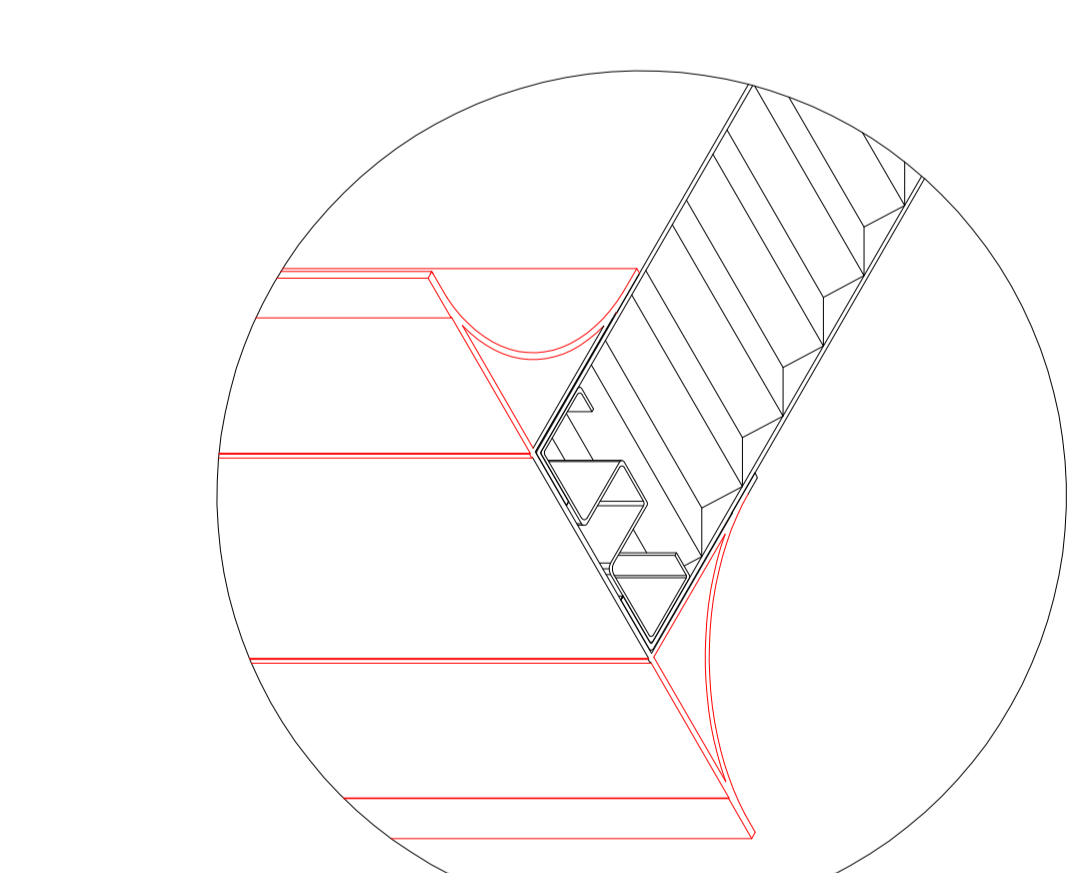
L PCV tubes for electrical installation



I Demountable panel



J Wall-wall connection types:



Description: aluminium profile rounded from one side
System type: L(A,B,C,X)L - rounded

Description: aluminium profile rounded from both sides
System type: L(A,B,C,X)L - rounded

K Corner finishing wall/ceiling

